

Low Smoke Zero Halogen Power & Control Cable

0.6/1kV 110°C (90°C) Flexible LSZH Flame Retardant,
ROHS III & REACH Compliant

BV

Flexible, Double Insulated Cable suitable for Shipboard & Marine Power & Control Wiring Applications with Class 5** Flexible, Tinned Copper Conductor. LR & ABS Approved.

- **Shipboard & Marine**
- **Single-core & Multi-core**
- **Panel Wiring**

Conductor

Tinned stranded flexible Class 5** copper to IEC 60228 & AS/NZS 1125.

Insulation

HEPR HFFLEX X-110

Outer Sheath

XLPO LSZH
SHF1 to IEC 60092-360

Voltage Rating

600/1000V AC
900/1500V DC

Operating Temperature

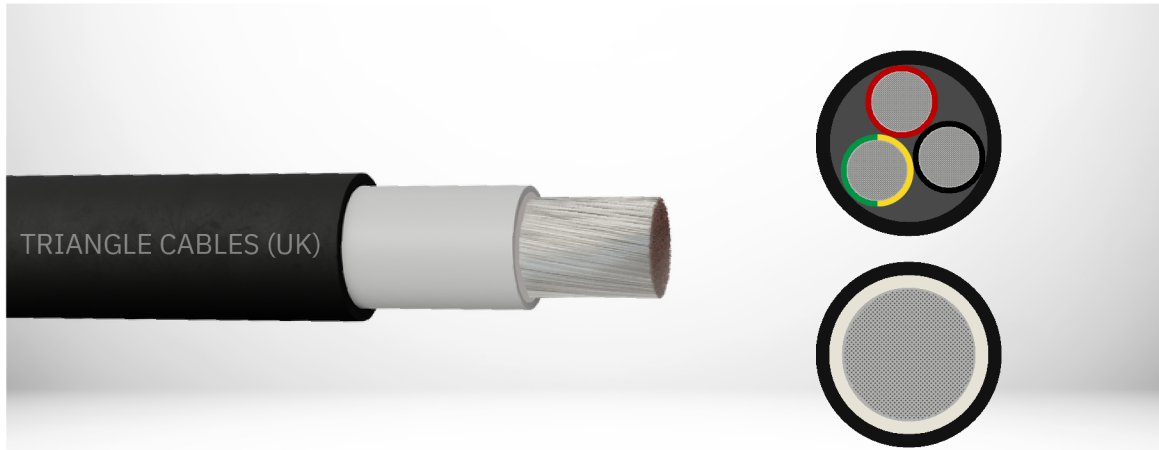
-40°C to +110°C
Current Ratings to 90°C
in compliance with IMO Rules

Standards

IEC 60228, IEC 60502-1
IEC 60332-1
IEC 60754-1&2
IEC 61034-1&2
IEC 60092-353
IEC 60332-3-22 CAT A

Approvals

ABS
Lloyd's Register



Images shown are for illustration purposes only

Number of Conductors	Cross-sectional Area (mm ²)	Product Code	Minimum Bending Radius (mm)	Approx. Conductor Diameter (mm)	Approx. Overall Diameter (mm)	Current Rating* (Amps)	Approx. Weight (kg/km)
1C	6	BV/1C6	27	3.1	6.7	52	81
1C	10	BV/1C10	31	4.1	7.7	72	124
1C	16	BV/1C16	36	5.1	9.0	96	182
1C	25	BV/1C25	43	6.4	10.7	127	276
1C	35	BV/1C35	49	7.8	12.3	157	378
1C	50	BV/1C50	56	9.2	14.0	196	528
1C	70	BV/1C70	64	10.8	16.0	242	714
1C	95	BV/1C95	73	12.8	18.3	293	960
1C	120	BV/1C120	82	14.5	20.4	339	1190
1C	150	BV/1C150	91	16.3	22.9	389	1484
1C	185	BV/1C185	101	18.0	25.2	444	1829
1C	240	BV/1C240	112	20.3	28.0	522	2340
1C	300	BV/1C300	125	22.5	31.1	601	2887
1C	400	BV/1C400	139	26.0	34.8	670	3786
1C	500	BV/1C500	155	29.2	38.7	720	4770
1C	630	BV/1C630	173	32.8	43.2	780	5990
2C	1.5	BV/2C1.5	32	1.5	8.1	20	75
2C	2.5	BV/2C2.5	38	2.1	9.5	26	108
2C	4	BV/2C4	41	2.5	10.3	34	143
2C	6	BV/2C6	47	3.1	11.8	44	196
2C	10	BV/2C10	55	4.1	13.8	61	298
2C	16	BV/2C16	64	5.2	16.0	82	432
2C	25	BV/2C25	79	6.4	19.8	108	670
2C	35	BV/2C35	91	7.8	22.7	133	909
3C	1.5	BV/3C1.5	35	1.5	8.7	16	95
3C	2.5	BV/3C2.5	40	2.1	10.1	21	135
3C	4	BV/3C4	44	2.5	10.9	28	184
3C	6	BV/3C6	50	3.1	12.5	36	255
3C	10	BV/3C10	59	4.1	14.9	50	398
3C	16	BV/3C16	69	5.2	17.2	67	582

*Current Ratings based on 90°C as per Table B.4 - IEC 60092-352



Low Smoke Zero Halogen Power & Control Cable

0.6/1kV 110°C (90°C) Flexible LSZH Flame Retardant,
ROHS III & REACH Compliant

BV

Number of Conductors	Cross-sectional Area (mm ²)	Product Code	Minimum Bending Radius (mm)	Approx. Conductor Diameter (mm)	Approx. Overall Diameter (mm)	Current Rating* (Amps)	Approx. Weight (kg/km)
3C	25	BV/3C25	84	6.4	21.0	89	900
3C	35	BV/3C35	97	7.8	24.2	110	1125
3C	50	BV/3C50	111	9.2	27.7	137	1733
3C	70	BV/3C70	128	10.8	32.0	169	2332
3C	95	BV/3C95	147	12.8	36.7	205	3142
3C	120	BV/3C120	164	14.5	41.0	237	3897
3C	150	BV/3C150	185	16.3	46.2	272	4952
3C	185	BV/3C185	205	18.0	51.2	311	6022
3C	240	BV/3C240	228	20.3	57.0	365	7372
4C	1.5	BV/4C1.5	38	1.5	9.5	16	116
4C	2.5	BV/4C2.5	44	2.1	11.0	21	167
4C	4	BV/4C4	49	2.5	12.1	28	234
4C	6	BV/4C6	54	3.1	13.6	36	320
4C	10	BV/4C10	65	4.1	16.3	50	505
4C	16	BV/4C16	75	5.2	18.9	67	742
4C	25	BV/4C25	93	6.4	23.3	89	1157
4C	35	BV/4C35	107	7.8	26.8	110	1578
4C	50	BV/4C50	124	9.2	31.0	137	2247
4C	70	BV/4C70	142	10.8	35.6	169	3012
4C	95	BV/4C95	163	12.8	40.8	205	4061
4C	120	BV/4C120	183	14.5	45.8	237	5049
4C	150	BV/4C150	206	16.3	51.5	272	6414
4C	185	BV/4C185	228	18.0	57.0	311	7797
5C	1.5	BV/5C1.5	42	1.5	10.4	16	148
5C	2.5	BV/5C2.5	49	2.1	12.2	21	215
5C	4	BV/5C4	53	2.5	13.3	28	294
5C	6	BV/5C6	61	3.1	15.2	36	407
5C	10	BV/5C10	73	4.1	18.2	50	637
5C	16	BV/5C16	84	5.2	21.1	67	933
5C	25	BV/5C25	104	6.4	26.1	89	1450
5C	35	BV/5C35	120	7.8	30.0	110	1973
5C	50	BV/5C50	139	9.2	34.7	137	2805
5C	70	BV/5C70	160	10.8	40.0	169	3769
5C	95	BV/5C95	183	12.8	45.8	205	5072
5C	120	BV/5C120	206	14.5	51.4	237	6300
5C	150	BV/5C150	231	16.3	57.8	272	7994
5C	185	BV/5C185	256	18.0	64.1	311	9728
5C	240	BV/5C240	285	20.3	71.3	365	11888
7C	1.5	BV/7C1.5	46	1.5	11.5	12	175
10C	1.5	BV/10C1.5	58	1.5	14.5	11	248
12C	1.5	BV/12C1.5	61	1.5	15.1	10	289
14C	1.5	BV/14C1.5	64	1.5	15.9	10	330
16C	1.5	BV/16C1.5	68	1.5	17.0	9	378
19C	1.5	BV/19C1.5	72	1.5	17.9	9	439
24C	1.5	BV/24C1.5	84	1.5	21.0	9	555
27C	1.5	BV/27C1.5	86	1.5	21.6	9	615
33C	1.5	BV/33C1.5	94	1.5	23.4	9	746
37C	1.5	BV/37C1.5	97	1.5	24.3	9	827
7C	2.5	BV/7C2.5	53	2.5	13.3	21	254
10C	2.5	BV/10C2.5	69	2.5	17.2	10	366
12C	2.5	BV/12C2.5	72	2.5	17.9	18	428
14C	2.5	BV/14C2.5	75	2.5	18.8	18	492
16C	2.5	BV/16C2.5	80	2.5	20.1	16	561
19C	2.5	BV/19C2.5	85	2.5	21.2	15	655
24C	2.5	BV/24C2.5	99	2.5	24.8	15	829
27C	2.5	BV/27C2.5	103	2.5	25.7	15	927
33C	2.5	BV/33C2.5	111	2.5	27.7	15	1116
37C	2.5	BV/37C2.5	116	2.5	29.0	15	1248

Sheath Colours

BK

Core Colours



V25.2

*Current Ratings based on 90°C as per Table B.4 - IEC 60092-352

** 0.75mm² - 6mm² Class 2 conductor, 10mm² - 150mm² Class 5 conductor, 185mm² - 400mm² Class 6 conductor



+44 (0) 1983 810606



www.tricab.co.uk



sales@tricab.co.uk